



Hugh Heward Challenge

Carspotting and Shuttle Schedule

Date	Service Type	Depart from/Arrive	Departure Time
4/29	Carspotting	Portland/Dimondale	6:00pm 7:30pm 9:00pm

Date	Service Type	Depart from/Arrive	Departure Time
4/30	Carspotting	Portland/Grand Ledge	6:00am 7:00am 8:00am
4/30	Carspotting	Portland/Charlotte Bridge	9:00am 10:00am 11:00am

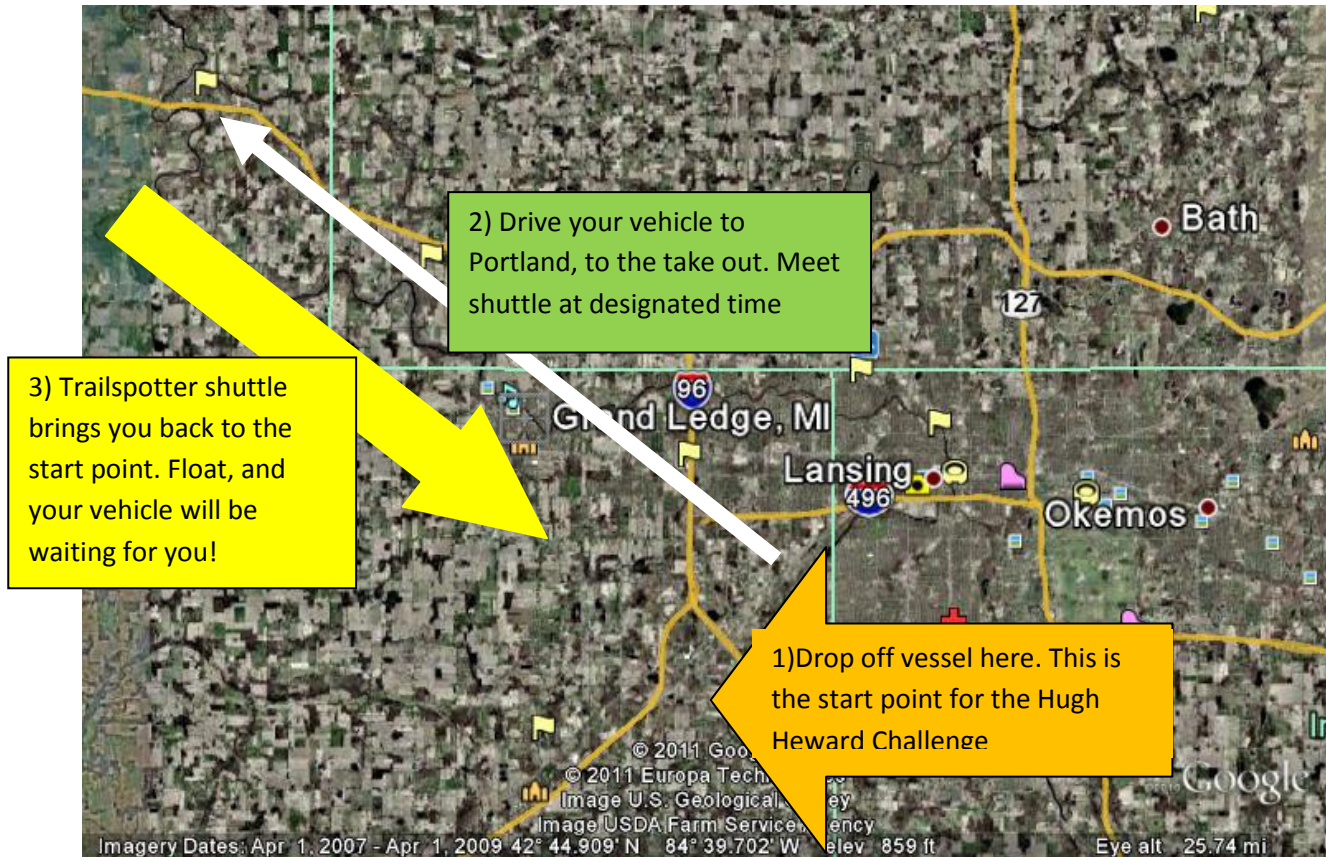
Date	Service Type	Depart from/Arrive	Departure Time
4/30	Shuttle	Portland to Charlotte Bridge, Grand Ledge, and Dimondale	First shuttle @ 12:00pm or when full

Shuttle will leave at times indicated or when full. Check with the Trailspotters Staging Area for current departure times. We will get everyone back!

NOTE: We DO NOT trailer canoes and kayaks. Read next page to learn how this works!!

How does carspotting work?

Carspotting: 1) Leave your vessel and equipment where you want to START your float 2) Drive your vehicle to where you will END your float. 3) Leave your vehicle at the take out, Trailspotter shuttle will bring you back to your START point.



How does the shuttle work?

Easy! Just park where you want to start your float (Dimondale, Grand Ledge, or Dimondale) and float the Grand River to Portland. The shuttle will pick you up and bring you back to the beginning. You will then bring your vehicle back to Portland to fetch your vessel and gear.

WE DO NOT TRAILER CANOES AND KAYAKS.